

Lancashire County Council

Corporate Parenting Board

**Minutes of the Meeting held on Thursday, 4th December, 2014 at 6.00 pm in
Cabinet Room 'C' - The Duke of Lancaster Room, County Hall, Preston**

Present: Members

County Councillor Lorraine Beavers	- Lancashire County Council
County Councillor Margaret Brindle	- Lancashire County Council
County Councillor Ian Brown	- Lancashire County Council
County Councillor Chris Henig	- Lancashire County Council
County Councillor Sue Prynn	- Lancashire County Council
County Councillor Miss Kim Snape	- Lancashire County Council
Jane Simpson	- representing Foster Carers
Catherine	- representing Adoption
Bob Stott	- Director of Permanence, Protection and Schools
Bradley	- LINX Representative
Kat	- LINX Representative
Mark	- LINX Representative
Sam W	- LINX Representative
Beth	- LINX Representative
Kristal	- LINX Representative
Gavin	- LINX Representative
Sam R	- LINX Representative
Callum	- LINX Representative

Co-opted members

Katherine Ashworth (late)	- representing Young People's Service, Lancashire County Council
Mark Hudson	- or his representative, representing Independent Reviewing Officers
Debbie Ross	- Designated Nurse for CLA, representing CCG
Diane Booth	- Children's Social Care
Kate Baggaley	- Barnardos
Ionie Calderbank	- Barnardos

Other Attendees

Richard Cooke	- Children's Trust Team
Caroline Beswick	- Lancashire Children's Rights Service
Lorraine Pearson	- Residential Services
Briony	- Young Person
Brooklyn	- Young Person

1. Introductions and Apologies

All were welcomed to the meeting and the following apologies were noted:

County Councillors Lord and Nicky Bamford.

2. Notes of the Meeting and Matters Arising from 11 September 2014

The notes from the previous meeting were agreed as an accurate record and there were no matters arising from them.

3. What our Elected Members have been doing

County Councillor (CC) Prynne thanked all Elected Members who had carried out Regulation 22 visits since the last meeting and that it was pleasing to note the consistent reporting of the care and passion that is given to our children in care.

CC Prynne, along with Bob Stott and Bradley from LINX attended the Lancashire Children's Safeguarding Board (LSCB) meeting on 14 November 2014 to present the work the CPB does. The presentation is attached. Bradley was commended on the amazing job he did with his presentation from LINX and the work they do with CPB and was thanked for attending. From the meeting it was agreed to look at a mechanism to ensure the Police are made aware and acting upon any Child Sexual Health (CSE) issues that arise from the LSCB and CPB.

Action: A protocol to be created jointly by LSCB and CPB.

CC Prynne attended Liverpool City Council's CPB meeting and met with the Chair of the Board, CC Murray. This is following CC Murray's attendance at our Elected Members CPB Development Day which was held on 26 August 2014 where CC Murray came along to talk to our County Councillors on their experience of inspection as a CPB and share good practice. CC Prynne felt that we engaged better with our young people along with the support from Barnardos in our meetings as theirs was more adult focussed.

All Elected Members met prior to this meeting to discuss the Executive Summary: CLA Sufficiency and Commissioning Effective Placements Strategy – 2014-2017. This document will be pertinent to the Board when looking at priorities in the Task and Finish Groups.

CC Beavers attended the Fostering Panel meeting.

CC Brown has undertaken two Regulation 22 visits and attended a Safeguarding conference. Following the last Activity Day he went to, he has since attended another one on 5 October 2014 for a full day and gave positive feedback from this and felt it more beneficial to attend for a whole day than just part of it which helped to understand the whole concept. He also attended the Adoption Panel for a follow up on the progress of the Activity Day.

Action: CC Brown to provide a report to officers from the Activity Day.

CC Prynne was most impressed that officers had actioned recommendations presented by the Board from the previous Activity Day and addressed them for the one held in October.

Action: The Board will continue to monitor the events.

Any potential matches will not be known until January.

Action: Officers to provide a report from the Activity Day at the next meeting.

CC Henig spoke about the Lancashire Fairness Commission that she is involved with which is pulling together information around living in a fairer community. The report will be ready in January and anybody can feed in.

Action: LINX to look at the website and speak to CC Henig about this.

4. LINX (Lancashire's Children in Care Council)

Takeover

During Takeover month, the young people have been all over Lancashire therefore their regular meetings have been a bit erratic. However they gave an overview of what they have been doing since the last CPB meeting was held. A breakdown of their activities is attached.

Young Inspectors

The Young Inspectors programme (details attached) is now in operation and this just for CLA. It was requested that the reports are sent to Elected Members and Bob Stott.

Action: Annette McNeil to send reports already received and future reports to Sam Gorton to circulate as agreed.

It was requested that Elected Members have a copy of the questions that the Young Inspectors ask so that they can link in with the Regulation 22 visits they carry out.

Action: Kate Baggaley to forward a copy of the questions to Sam, who will then forward to Elected Members.

Debbie Ross asked if they would consider looking at health services who are involved specifically with CLA. The Board agreed this should be looked into.

Action: Debbie to speak further with Kate around this and signpost the Young Inspectors to the CLA services within health.

European Network of Ombudspersons for Children (ENOC)

Some young people from Lancashire who are involved with the ENOC showed some videos (attached links) that they have produced and been shown around Europe. The Board commented on how very poignant the videos were and that they had made the point brilliantly.

Action: Sam Gorton to send the links to CC Henig so she can link these in with the Lancashire Fairness Commission project.

Christmas Tree Activity

An activity was carried out where the Board were asked to write on the baubles and put on the Christmas trees, in order of priority what they thought people can do to help young people who are looked after. The results are attached. There was a lot of communality from the groups and the majority do not cost a lot of money ie being listened to, being safe, being loved and cared for. We should all look at how we can further support our children in care in the future.

Action: The Board will look at how the priorities such as emotional health and safety highlighted through the activity are being implemented across settings and amongst professionals.

Performance Report

The performance report attached was presented by the young people following their meeting prior to this to discuss it.

Action: Further information is required on the NEET figures. Bob Stott to nominate an officer and ask them to report on what strategies are being devised and implemented to improve the figures.

Regarding the health and dental checks, Debbie Ross and Diane Booth are working on improving the results. Lots of things were highlighted as to why the figures were not good, one being the different targets set by Government for Health and Local Authorities. This has now changed and the measures are the same and updated results will be reported at the next meeting.

Action: To update on the Health and Dental results in February 2015.

It was raised that young people did not like having the health checks as other young people who are not in care do not need them. There is some new guidance around this coming out in March 2015, which will be shared with the Board and is out for consultation.

Action: Debbie Ross to share the draft guidance with Kate Baggaley for LINX's feedback.

Debbie also informed the board that she had feedback at a national level that young people in care in Lancashire were unhappy about having to have the health assessments regularly.

With regards Education and long term placements, a permanence strategy is being developed and will include permanent fostering as the same as adoption.

Action: Diane Booth will go to a LINX meeting to discuss the strategy with them when it is ready and then bring it back to CPB.

IRO Report

Reporting back from the last meeting the young people presented a report to the Board after further discussion away from this meeting. Please see attached report. They had devised some questions to ask the IRO service. Bob Stott commended the young people on an excellent set of questions posed and the Board agreed.

Action: Sam Gorton to send Mark Hudson a copy of the questions and he will feedback the answers at the next meeting.

CC Prynne was concerned that when she was visiting Residential Homes, young people were saying they did not know who their IRO was.

Action: Mark Hudson to follow up.

Rock FM – Young Achievers Award

Kate Baggaley gave some background to the award that the LINX group were nominated for and announced that they had come runners-up. CC Prynne awarded them their certificates.

5. CLA Strategy and Leaving Care Strategy

Young people and the Children's Rights Leaving Care group have been consulted regularly on the strategies which were attached to the agenda, so they are well endorsed by young people.

A website is being developed, which will be young person friendly where all information will be available including these strategies.

Diane agreed to come back later next year when the website is up and running to give a demonstration on it.

The Sufficiency Strategy is taken from the CLA and Leaving Care strategies.

Action: Sam Gorton to email out again the CLA and Leaving Care Strategies to Elected Members.

Diane reported that as part of takeover month, young people took over the CSC Management Team meeting with over 40 managers attending and what young people commented on will feed into the service plan and will also be returning to the service in the New Year to ensure the managers are addressing what was raised by the young people.

6. CLA Educational Attainment

Bob Stott briefed the Board on the findings in Lancashire for 2014 from KS1 to KS4.

It was noted that there were issues across the board with the figures and work needs to be done to improve future results. The Board agreed that this issue needs to be dealt with immediately and that signposting pupil premium could help.

Action: Bob Stott to invite Jonathan Hewitt to the next meeting to inform the Board of the actions being taken to improve targets, along with the Chair of Lancashire Association Secondary Headteachers (LASH) and a member from the Primary Headteachers in Lancashire forum (PHiL).

Discussion took place around the writing achievements at KS1 and if it was not suffice at this age, then it will have a detrimental affect all through school life.

Action: The CPB agreed that a Key Stage 1 CLA writing strategy urgently needs to be devised and implemented across all Lancashire schools and possibly co-ordinated by the designated teachers and Virtual Head. Bob Stott to report back to the Board.

7. Children and Young People's Plan (CYPP) and Partnership Arrangements

Richard Cooke gave some background as to the changes and why they have taken place around the Children's Trusts and this is detailed in the report attached to the agenda.

Action: Richard agreed to come back to a future meeting to inform the Board how the new partnerships are working.

The next task is to look at the Partnership Boards and how they can work more collaboratively. CPB will be part of this redesign.

Action: Richard Cooke to discuss with CC Prynne and Bob Stott on how to move the redesign forward.

CC Brindle agreed with the proposal at looking at new ways of working and making meetings more meaningful.

CC Prynne has spoken with the Chair of the LSCB when she attended the conference they held for private providers, which she felt was really successful as to how we could have joined up events in the future.

8. Lancashire County Council Provider Report

Diane spoke to the report that was circulated with the agenda and that feedback from young people was positive.

Only a small cohort of foster carers answered the questionnaire and it was discussed as to whether this was something the young people could do for fostering and residential services.

Action: Diane Booth agreed to look further into the questionnaire and questions being asked and to report back at the next meeting.

9. Any Other Business

Bradley announced that he is going to be helping Kate at Barnardos with uploading information into KOKO which is their online website.

10. Date and Time of Next Meeting

Thursday, 5 February 2015 at 6.00pm in the Duke of Lancaster Room (formerly Cabinet Room 'C'), County Hall, Preston, PR1 8RJ.

Information Items

These items were not discussed at the meeting as they are for information only. Any issues arising from them, please forward to Sam Gorton, Clerk to the CPB who will forward to the relevant Elected Members/officers.

11. Customer Feedback Team

12. Office of the Children's Commissioner Care Monitor and Other Information

13. New Rights for Young Carers - Changes to the Care Act and Children Act Explained

Children Looked After – The Role of the Corporate Parenting Board

Presentation by

Bob Stott, Director of Permanence, Protection and
Schools

County Councillor Sue Prynne, Chair of the Corporate
Parenting Board

&

LINX (Lancashire's Children in Care Council)

14 November 2014

Aims

To outline the:

- Purpose
- Priorities
- Life in Care
- Achievements
- Continuous Improvement

Purpose of the Corporate Parenting Board

- Promote awareness
- Secure commitment & contribution
- Set high expectations & hold to account
- Listen & involve children and young people
- Oversee and monitor performance
- Consider the outcomes of regulatory visits and inspection reports
- Ensure strategies join up and prioritise children looked after
- Celebrate the achievements of children looked after
- Ensure adequate resources provided
- Undertake visits & receive feedback
- Comply with UN Convention on Rights of Child

So What Have We Achieved?

Words to Actions to Outcomes



Action	Difference Made
Celebrating Achievement	Supported annual celebration event
Re-established/restructured Children in Care Council	Established integrated links with Youth Councils, achieved wider representation
Publicising needs of Young People and the Board	Positive feedback from elected members who better understand role of a Corporate Parent
Scrutiny function	Elected members independently evaluate residential homes against the Board's priorities Scrutinise Adoption Activity Days
Young People's Engagement	Young People have more involvement in the Board meetings and play an active role in setting agenda and leading discussions
Pupil Premium	Continue to raise awareness and challenge schools
Change of Format to Meetings	Young people are now allocated the first half of the meeting and feedback from them is that this is working well

How the Board Works

- Bi monthly evening meetings
- Agenda linked to agreed priorities
- Active involvement of young people
- Young people set the agenda and chair one meeting per year
- Elected members meet prior to the meeting
- Young people meet prior to the meeting
- Elected member champions
- Working group support
- Presentation, reports, interactive activity and celebration
- Reports to the Cabinet Member for Children, Young People and Schools

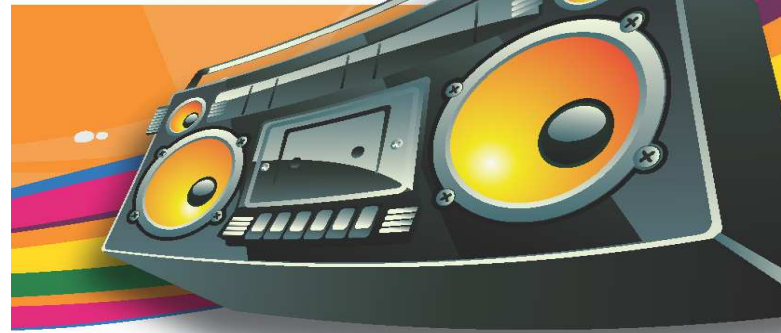
Priorities - What our young people want

Lancashire County Pledge
You told us how you
wanted us to care for you and we
promise we will...

Handle Speakers

Helps you carry it
- when you work with us
you should always talk and
think about the pledge.

Loud and clear -
everyone knows about
the pledge.



Radar

We should always be on the radar - we should not be forgotten and everything should be in place when our placement is taken up.

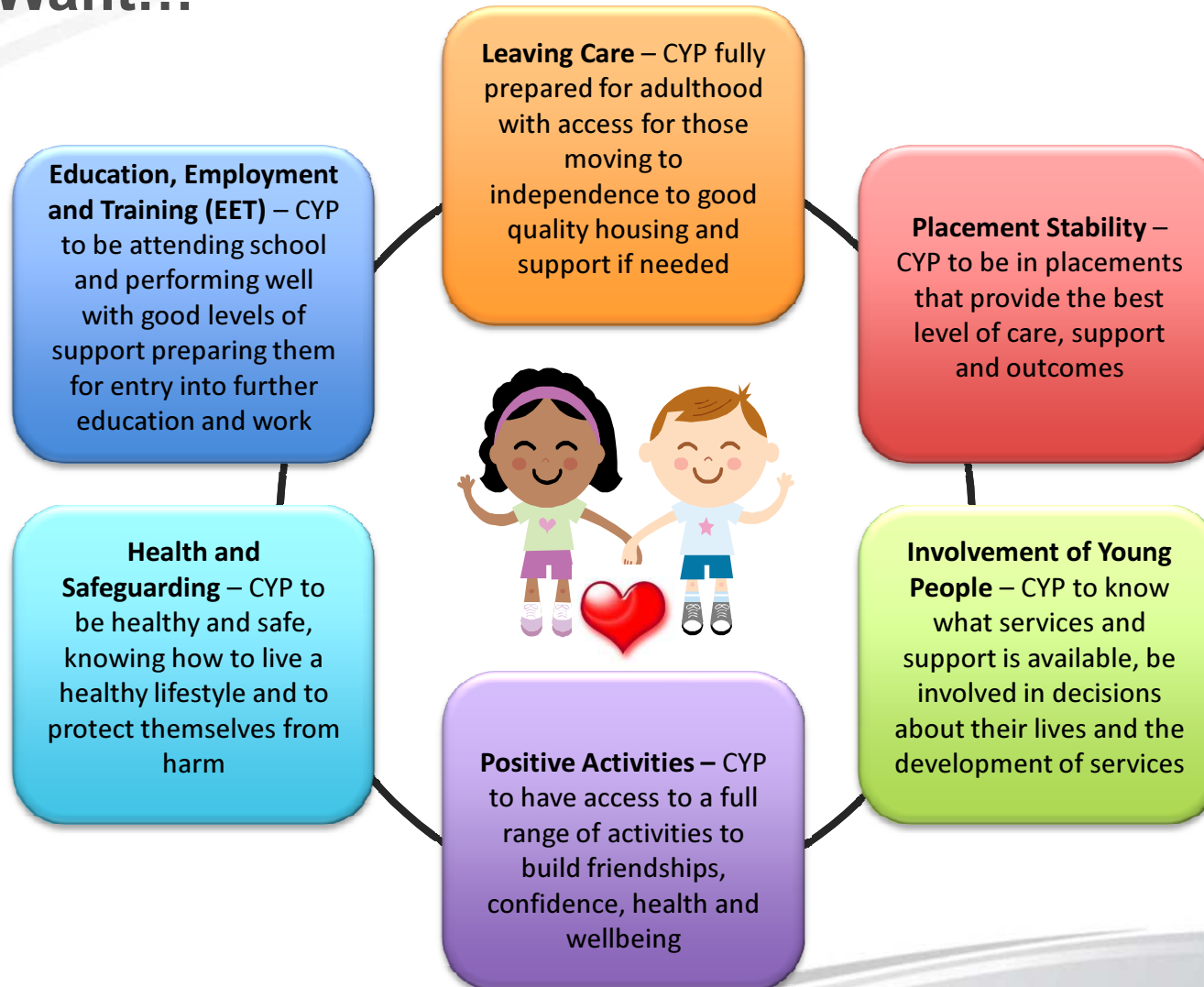
Batteries

The things that make it work - everyone is treated fairly, its child centred, the Government have made a pledge to us, that we get plenty of notice before things happen.

Tuners

Everyone who works with us should be tuned into what we think - we should be involved in decisions and have a say on what services we need.

Priorities - Corporate Parenting Board – We Want...



Children Looked After need to be listened to

Life for us in care in Lancashire



Being in care: What is different for us?

It's important to remember that...

... “everyone’s in care for different reasons” and that “everyone’s an individual”.

All children and young people have different needs but for those that are in care there are some things that are different. Our experiences are different and we have different needs.

Some things about Children Looked After (CLA) that maybe people do not think about...

Your home or placement:

- More than one placement.
- Some people might feel like it is not their home.
- Living with other young people.
- Different area to where you grew up.

The people:

- Lots of people involved in making decisions for you.
- Sometimes we are the last to find out important information.
- It is not your family – someone is paid to look after you.
- You do not always have strong relationships with the people in your life.

Rules:

- Some people need CRB checks for your friends' parents.
- Photographs.

Leaving care:

- Moving into independence – feeling too young.
- Provision when leaving care is reduced.

Some other activities...

- Lancashire Youth Council:
 - The CiCC is now part of the youth council structure.
 - Young people from the CiCC attend campaign nights and represent CLA at the exec night and at cabinet.
- Young people from CiCC attend monthly PULSE meetings – The Health and Well-being board for young people in Lancashire
- Training of LCC staff.
- Interviewing new staff and volunteers.
- Commissioning e.g. choosing new residential units for CLA.

Some things we like...

We like being involved in decisions made about us.

Having the CiCC now is good as it gives the opportunity for children and young people to have their voices heard.

A young person said, "I'm proud to be part of the CiCC, I have met some great people and my confidence is growing. I like having the opportunity to make a difference for all young people in care and leaving care".

Some things we want to change...

- “I know there are rules... but reasons behind decisions are not always made clear”.
- More support when leaving care.
- The CPB is good but difficult for young people to understand but we like that young people are able to be involved.
- Children and young people would like more child friendly information.

Life in Care – Facts

Question	Answer
How many children and young people does Lancashire County Council have in its care?	Number has risen over last year and stood at 1,622 at 31 September 2014. Rate per 10,000 at 66.7 is above the national average (60.0), but below the statistical neighbour average (67.6) and well below the regional rate (79.0)
What is the peak age for children/young people coming into our care?	Children and young people aged under 10 years account for over half (51%) of those in our care but the peak ages for entering care are 0 - 1 years old
Where might children in our care live?	With foster carers, in a children's home, with relatives/family friends
What proportion of these live with foster parents?	Around three quarters (69%) are in foster care
What is the main reason why children and young people come into care?	Abuse and neglect along with family stress/problems are the main reasons
How many CLA are also known to the Youth Justice system?	Around 6% of children looked after have cautions/convictions
At what age do Care Orders end?	18 years old – however we know in reality with our own families that ideally young people should stay with foster carers until 21 years old

Life in Care – Facts Cont'd...

TOTAL NUMBERS OF CHILDREN LOOKED AFTER

District Team	Mar 12	Mar 13	Mar 14	Apr 14	May 14	Jun 14	Jul 14	Aug 14	Sept 14	% of Total CLA	% Change v 11/12
Lancaster	119	140	110	113	114	123	137	133	139	10.3%	
Fylde/Wyre	90	94	73	78	77	81	86	87	96	7.1%	
Preston	193	199	178	188	188	184	188	190	196	14.5%	
Chorley/ S Ribble	178	175	153	150	142	143	142	142	147	10.9%	
W Lancs	128	135	118	116	118	121	120	117	123	9.1%	
Hynd/R Valley	185	211	151	147	145	137	133	138	160	11.9%	
Burnley	157	204	219	222	231	226	221	221	232	17.2%	
Pendle	188	221	176	173	169	174	168	120	171	12.7%	
Rosendale	86	103	88	85	83	90	89	84	84	3.2%	
District	1324	1482	1266	1272	1267	1279	1278	1282	1348	83%	
Central teams*	-	-	325	317	299	309	305	306	274	17%	
Lancashire CLA	1324	1482	1591	1589	1566	1588	1583	1588	1622	100%	22.6%

* Where cases on LCS are not assigned to a district CSC team

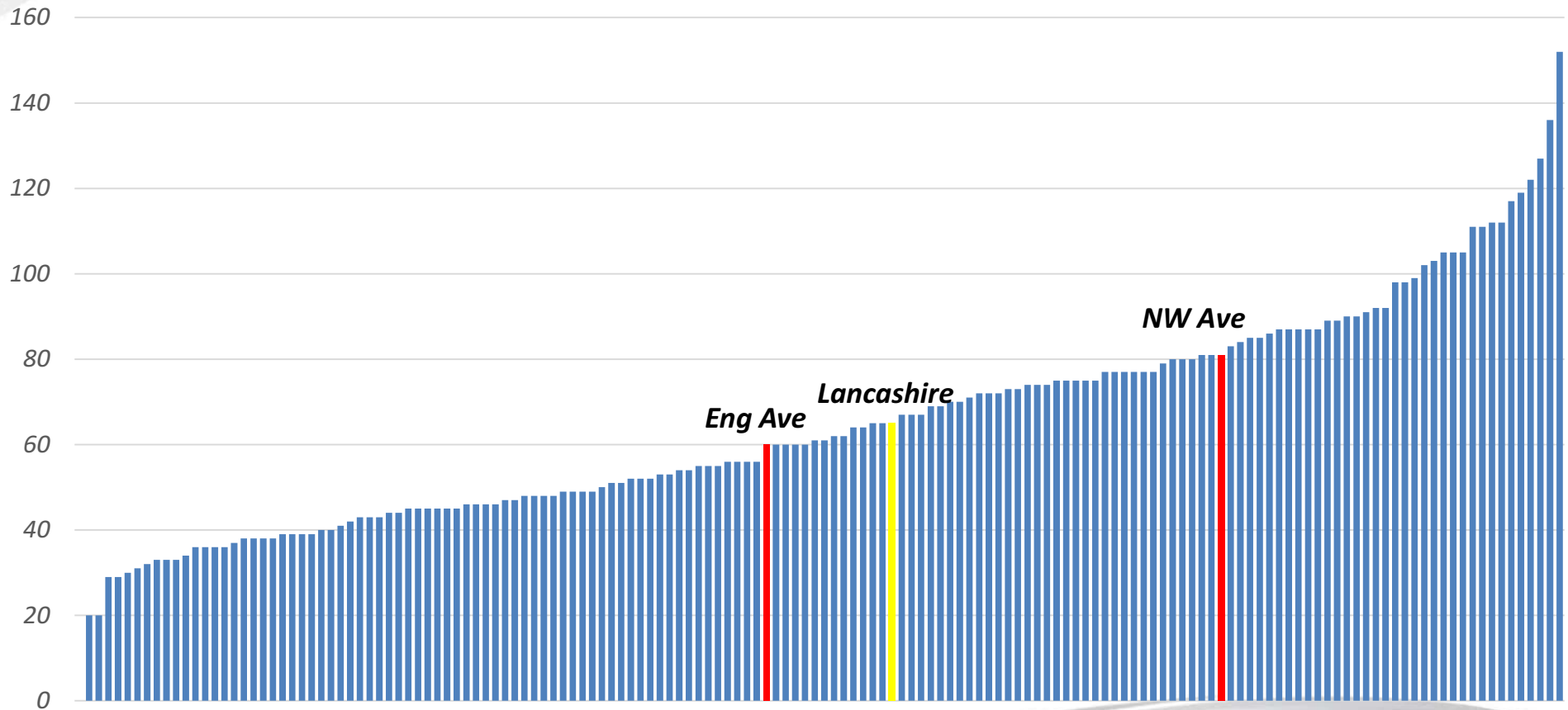
Commencement of LCS

Life in Care – Facts Cont'd...

RATE PER 10,000 (0 – 17) OF CHILDREN LOOKED AFTER									
District	Mar 12	Mar 13	Mar 14	Apr 14	May 14	Jun 14	Jul 14	Aug 14	Sept 14
Lancaster	45.2	53.2	41.8	43.0	43.3	46.8	49.8	50.6	52.8
Fylde/Wyre	26.9	28.1	21.8	23.3	23.0	24.2	25.7	26.0	28.7
Preston	64.2	66.2	59.2	62.5	62.5	61.2	62.5	63.2	65.2
Chorley/ South Ribble	39.5	38.9	34.0	33.3	31.5	31.8	31.5	31.5	32.6
W Lancs	56.7	59.8	52.3	51.4	52.3	53.6	53.1	51.8	54.5
Hyndburn/Ribble Valley	60.4	68.9	49.3	48.0	47.3	44.7	43.4	45.1	52.2
Burnley	80.5	104.6	112.3	113.9	118.5	115.9	113.3	113.3	119.0
Pendle	91.5	107.5	85.6	84.2	82.2	84.7	81.7	82.7	83.2
Rosendale	56.9	68.2	58.3	56.3	55.0	59.6	58.9	55.6	55.6
Lancashire CLA	54.4	60.9	65.4	65.3	64.4	65.3	65.1	65.3	66.7

→
Commencement of LCS

Children Looked After as at March 2014 (rate per 10,000 population)



Inspection Achievements

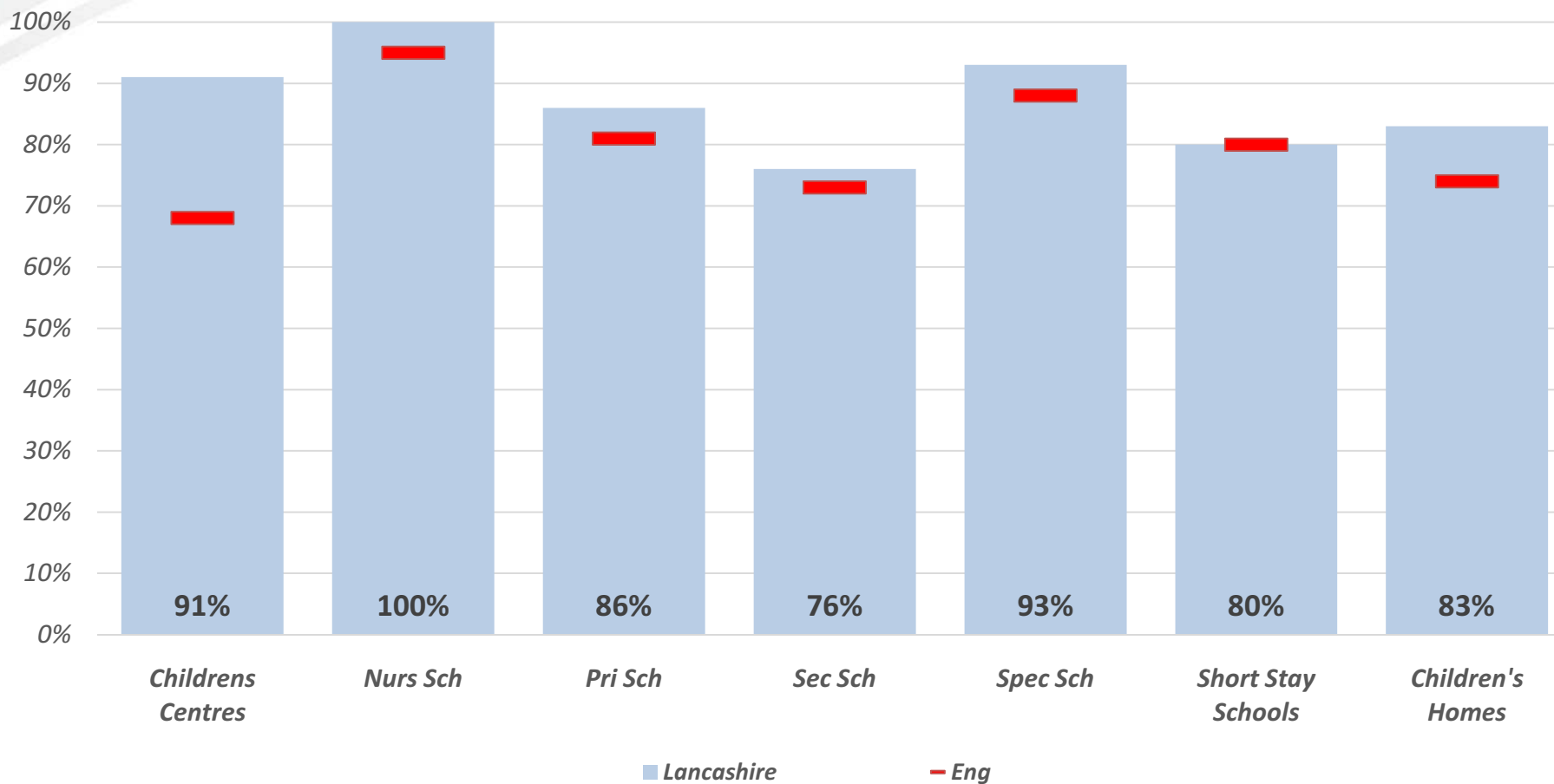
- 83% (15) of LCC residential children's homes and short breaks homes are 'good' or 'outstanding'
- Safeguarding/Looked After Children services evaluated as 'good with outstanding features' (2012)
- Adoption Service evaluated as 'good with outstanding features' (2011)
- Fostering Service evaluated as 'outstanding' (2011)
- YOT inspection strong outcome (2009)
- Annual assessment judgement 'Authority that performs well' (2011)
- There have also been two unannounced inspections which have shown no areas for action
- Recent Ofsted thematic inspection of neglect cases in Lancashire highlighted a lot of good work to identify and tackle neglect (July 2013)

Inspection Facts

	Total Inspected (Jun 14)	Number Judged Good or Outstanding	Number judged as Inadequate
Children Centres	58	53 (91%)	0
Nursery Schools	24	24 (100%)	0
Primary Schools	482	415 (86%)	3 (1.0%)
Secondary Schools	83	63 (76%)	8 (10%)
Special Schools	30	28 (93%)	1 (3%)
Short Stay schools	10	8 (80%)	1 (10%)
Children's Home	18	15 (83%)	0

Inspection Facts

% of settings judged as Good or Outstanding



Comments from the Inspection of Safeguarding and Looked After Children Services - Ofsted March 2012



Corporate parenting arrangements are outstanding, supported by elected members who together effectively champion the needs of looked after children. The council, through the corporate parenting board, has high aspirations for those in its care.

Children and young people who attend the CiCC have good access to senior officers and elected members through their membership on the highly effective youth council as well as the corporate parenting board.

Corporate parenting arrangements are outstanding. This work is supported by elected members who fully know and understand their safeguarding responsibilities in relation to looked after children. They effectively champion the needs of looked after children. Looked after children and young people are empowered through their active involvement with the corporate parenting board and links with the CiCC are very good. Children and young people have many opportunities to make representations including formal arrangements at cabinet level which are helping to influence the shape of services children and young people need and want, such as in the recruitment and training of staff and improvements made to the quality of children's homes.

Performance Data - Strengths

Measure	2013 Perf	Rank (out of 152 LAs)	Quartile	Eng Ave
CLA Adopted in the Year	16%	54	2	14%
Long Term Placement Stability of CLA	72%	32	1	67%
CLA Placed more than 20 miles away from Home	6%	12	1	12%
CLA – Level 4+ Grammar, Punctuation & Spelling at KS2	48%	28	2	45%
CLA – Persistent Absentees	2.9%	7	1	6.1%
CLA – Fixed Term Exclusions	7.7%	17	1	11.3%
Emotional Health of CLA (Strengths and Difficulties Questionnaire)	13.5	45	2	14
CLA Offending	5.9%	52	2	6.2%
CLA – Level 4+ Maths at KS2	62.5%	36	1	55.7%

Validated figs for 2014 will be available at the end of the year

Possible Key Lines of Enquiry for Inspectors based on Performance Data



Measure	Current Perf	2013 Perf	Rank (out of 152 LAs)	Quartile	Eng Ave
CLA Rate Per 10,000	66.7 (Sept 14)	65.0 (2014)	74	3	60.0
% of care leavers in Suitable Accommodation	-	80%	125	4	88%
% of care leavers in Employment, Education or Training	-	55%	95	3	58%
% of CLA 5 achieving GCSEs A* - C	-	28.2%	96*	4	36.6%
% of CLA 5 achieving GCSEs A* - C inc Eng & Maths	-	12.9%	46*	4	15.3%

* Not out of 152 LAs

Validated figs for 2014 will be available at the end of the year

Continuous Improvement

The Board will look to:

- Develop the role of the designated GP
- Further develop the young inspector programme (CLA Young Inspectors)
- Strengthen role of LINX (CiCC) and LINX Junior (primary aged children) and increase its membership
- Active monitoring of the pledge and the CLA Sufficiency Strategy
- Maintain monitoring of all services available to CLA
- Strengthen involvement of Elected Members

Questions?

CPB to LSCB

- How can the LSCB further support the work of the CPB?

LSCB to CPB?

For further information on Corporate Parenting Board,
please visit the [website](#)

SEPTEMBER

- LINX East meetings moved to Burnley Youth Zone
- Members attend PULSE meeting (emotional Health and well being board)
- Members attend Youth Council
- Combined meetings moved to County Hall
- Primary Activity Day



OCTOBER

- 9 members of LINX who received the Diana Award attend the National Inspire Day in London
- Member of LINX attends European Network of Ombudspersons for Children 18th Annual Conference in Edinburgh to showcase short film on the theme of 'Austerity'
- Member of LINX attends All Party Parliamentary Group for Looked After Children and Care Leavers at Westminster



- Member of LINX attends Office of the Children's Commissioner website re-design consultation
- Member of LINX attends Care Quality Commission Advisory Board Meeting
- Members of LINX meet with Principle Social Worker to plan Social Worker training workshop



- 3 members of LINX attend 'Taking it to the Next Level' in Manchester
- 1 member of LINX attends ChildLine International Conference in London
- Members of LINX attend PROUD celebration Event planning group meeting



- Member of LINX attends Induction Training for Social Workers at Alston Hall to talk about participation
- Members of LINX Young Inspectors visit Crestmoor for a trial inspection
- Members of LINX are interviewed by Preston FM



November

- Member of LINX attends Lancashire Safeguarding Children's Board with CC Prynn and Bob Stott
- Members of LINX attend Annual Review of Participation Service to report to commissioners
- LINX attend Rock FM Time to Shine Awards and are runners up for Young Achiever of the year
- LINX 'Takeover' Barnardo's Regional Managers' Meeting in Crewe

November

- Members of LINX attend Young Inspectors visit of Fostering Agency in Lancashire to speak to Looked After Children and staff
- LINX 'Takeover' Children's Social Care Meeting 'Making Social Care Better'
- LINX attend PROUD planning Group
- LINX attend Lancashire Participation Network 'Takeover' meeting



Children Looked After Young Inspectors



August 2014

7 members of LINX attended a residential trip to Borwick Hall in Lancashire with members of Lancashire's Young inspectors and Strategic Lead for Children and Young People's Participation and staff from Barnardo's.

September 2014

A further 4 young people from LINX received training.

The agreed aim of Youth Inspections:



To develop a set of recommendations about how a fostering agency can improve. These recommendations are based on speaking to staff and young people - to identify important and easy to achieve improvements.

The rationale for these recommendations is explained and fostering agencies are revisited by Young Inspectors at a fixed point in the future to see if they have been successful in implementing them.



Young Inspectors will not pass judgement / grade/ merit an agency because all services could be improved. Information is gathered through talking to young people and staff about how the agency could be improved.



The Visits:

All staff are asked 2 -4 open ended very broad questions questions

(eg Where would you like your service to be in six months?)



This is followed by 4-5 specific questions.

(eg Can you tell us how your confidentiality policy works?)



Specific questions are based on the areas highlighted by young people.

(eg if young people were concerned about staff attitude - the specific questions to staff would be based on this).



This means Young Inspectors have to speak to service users before they speak to service staff.

All questions are planned out in advance, although ad hoc follow on / extension questions are also used.



Pre Inspection Question:

'We would like to understand a bit about you before we meet you including your background, your vision for young people and how you improve life for them. We would also like to know how you do the work you do and where. Please tell us this information on one side of A4. How you present the info is up to you but pictures and colour are always nice!'

Questions to Young People:

- Would you recommend this service to other people – why?
- What do you think could make the service better?
- Do you like this service and why ?
- Is this service efficient in making a difference to your life? - how / why?

- How involved are you and other young people in making decisions about the service?
- How do you know you are being listened to?
- Does this service enable you to become more independent?
- How does this service make a difference to you ? What difference does it make?

- Are all young people treated equally?
- Are all staff approachable / how do you know this ?
- Does this service create a comfortable environment for you ? (and how)



Questions to staff:

- How do you prioritise what your service does / what has it prioritised?
- How do you continually improve your service / what do you want to improve?
- How do you listen to children and young people?
- How do you help children and young people?

- What challenges do you face day to day?
- What are the aims of the service?
- Do you feel the service is useful to the community? (how?)
- Do you think having young inspectors coming in is helpful?
- How effective is your service? /What is your service effective at?

Once the questions have been asked to the young people and then the staff (in 2 separate visits) a list of recommendations is written up and sent to the Fostering Agency.

In 6 months the Young inspectors revisit the venue to see if their recommendations have been followed

The Story so far....

In October we visited a Lancashire County Council Residential Unit to run a pilot inspection. We have sent them our recommendations.

In November we inspected a private fostering Agency and have sent them our recommendations.

We will visit both units again in 6 months time to see if our recommendations have been carried out.

We have Inspection visits booked in
December and January at two more
private fostering agencies

The Good News is.....

So far we have experienced
happy children and
young people living in
care in Lancashire.



Links

http://youtu.be/YLCjX-d_3zM

<http://youtu.be/wVIZcDI1QtI>

<http://youtu.be/25jXBEiKJ3s>

Corporate Parenting Board
4th December 2014

**What makes a Happy Looked after Child/Young Person
(Christmas Tree)**

Group 1:

Top tier – not to vilify/judge, listen to us, being prepared for
(most important) Independence

Middle Tier – Equality, having choices, explain why not

Bottom Tier – more money for clothes, getting voice heard, be
given opportunities

Group 2:

Top Tier - no funding cuts, opportunities to try new things,
listening and asking

Middle Tier - informed and told what's happening,
holiday/fun/enjoyment, valuing the individual
within their network, After Care and Post Adoption
support, options of contact with birth family

Bottom Tier - not to be judged, staying in one place
(secure/safe)

Group 3:

Top Tier - Getting the things they need, no cuts to funding,
workers that care, being loved and cared for,

Middle Tier - being noticed, being healthy, seeing family, good
education, going on holiday, someone telling you
are good at something, having hobbies and
interests, having friends, good relationships,
feeling safe, being listened to

Bottom Tier - not getting a good education, not seeing family,
being ignored, not getting the right support,
bullying, people telling you are rubbish, cuts to
funding, peer pressure,



Feed back from LINX on Corporate Parenting Board Report

What we like:



- 6 out of 100 children have moved twice or more which is an improvement on last year.

- Fewer children than ever have more than 2 placement moves.

- 3 in 100 Looked After Children went missing July-September 2014 which is lower than in previous quarters.



- Numbers of children looked after becoming adopted is increasing with 227 being adopted in the last 3 years.

- 17 in 100 Children Looked After were given a permanent home under special guardianship order – a big improvement on last year.



- Overall, more looked after children given permanent homes – 134 in the year to date. This is a considerable increase.

- In 2013-14 there are 36 Care Leavers studying at university including 13 first year students. Although this is 1 less than the previous year we are still happy about this number.



What we are concerned about:



- A slight increase in the number of Children Looked After in September 2014.

- Average re-referral rate for 2013/14 increased slightly to 21%.

- 69 in 100 Looked After Children are in long and stable placements (at least 2 years) placements. This is below target of 72 and slightly lower than last year's performance.



- Educational attainment remains stable at 13% Children Looked After achieving 5 A*-C. This is less than the National Average of just over 15% and less than Lancashire's target of 18%.

- Attendance at school is below Lancashire's target of 96%.

- There have been 52 Fixed term exclusions which is below the target of 70.



- 67 in 100 Children Looked After have up to date health assessments and 78 in 100 have an up to date dental assessment, both lower than the previous year.

- In 2013/14 82 in 100 care leavers are in suitable accommodation this is below the target of 89 in 100 and a decrease from two years ago (93 in 100).



- Care Leavers in Employment Education or Training is 4 in 100. This is lower than in 2012-13 (55 in 100).

Thank you





Feed back from LINX on Independent Reviewing Officers Annual Report

What we like:



- The proportion of Looked After Children placed outside Lancashire's boundaries is low (just under 4%)

- Increase in the number of meetings chaired by Independent Reviewing Officers.



What we are concerned about:



- Caseloads are consistently higher than they should be.

- There has been a slight drop in performance of reviews being completed on time.

Questions for the Future:



- How will you address the Drop in performance of reviews being held on time?
 - How will you strengthen communication between Looked After Children and their Independent Reviewing Officers outside formal reviews?
- Not all Children and Young People have face time so how else will you communicate with them?
- How will you cope with increasing numbers of Looked After Children?
- How will you try to involve more young people in their reviews?



Thank You



